



Recommended P.C.B Layout(Top Side)  
(PCB BOARD TOLERANCE±0.05)

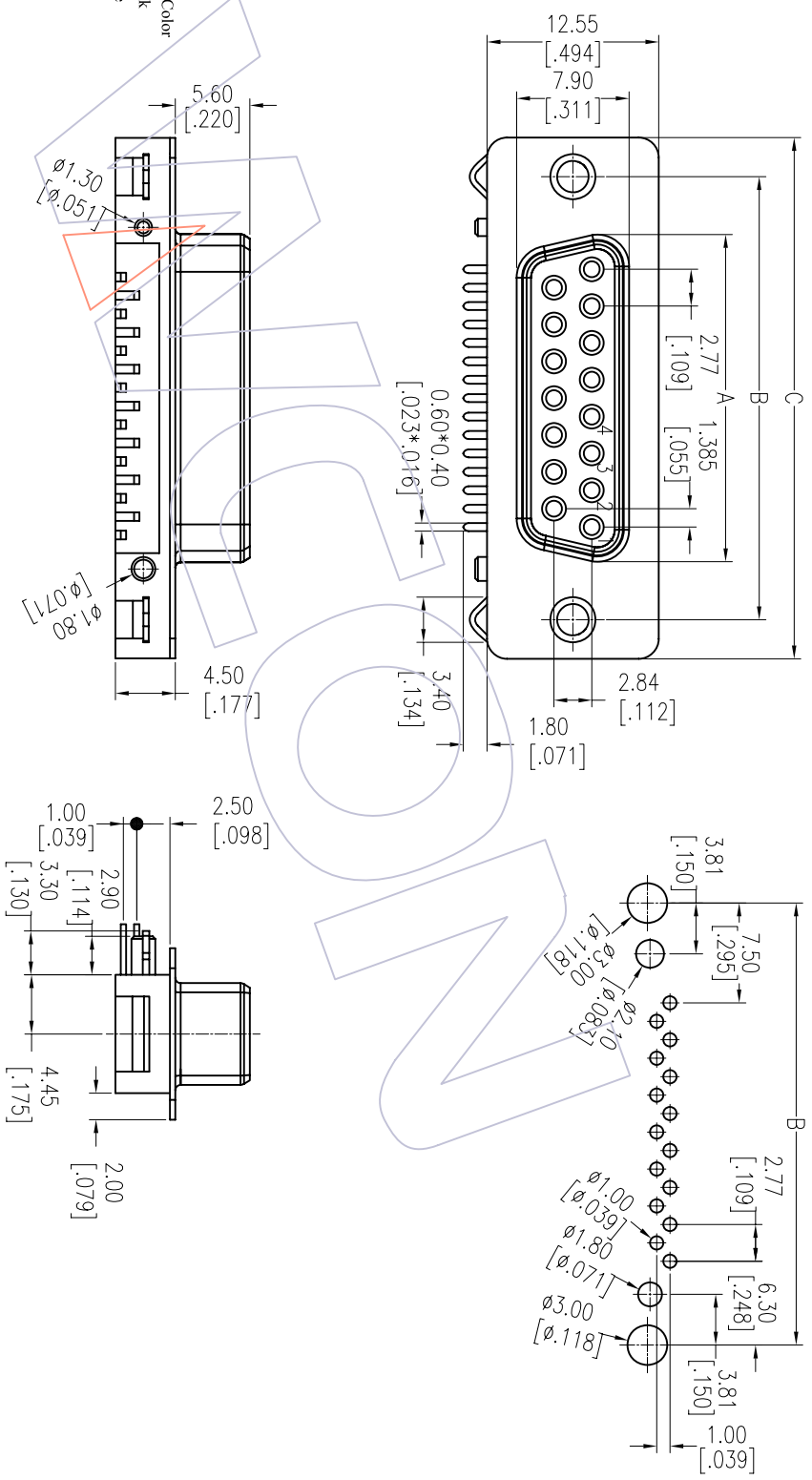
NOTES:

- Current Rating: 3.0AMP
- Contact Resistance: 25mΩ Max
- Withstand Voltage: 500V AC/DC
- Insulation Resistance: 1000MΩ Min
- Operation Temperature: -55°C to +105°C
- Contact Material: Brass
- Contact plating: Au Or Sn over Ni
- Insulator Material: PA66+30%G.F UL94V-0
- Sheet: Cold Roller Steel, Ni Plated
- Revit/Harpoon: Brass, Sn Over Ni Plated

# Ordering Information

6225-XX F M N XX B 01

No.of Pins 09,15,25P  
Product Type M=With Revit Without Screw  
Contact Plating S0=Gold Flash/Tin S3=10u"Gold/Tin S4=15u"Gold/Tin S5=30u"Gold/Tin SN=Tin  
Insulator Color B:Black U:Blue



No. of Positions	DIM "A"	DIM "B"	DIM "C"
09	16.30	24.99	30.81
15	24.66	33.32	39.14
25	38.38	47.04	53.04

REV	DATE	MODIFICATION DESCRIPTION	CHANGE	OPERATION	DRAW	DATE	SCALE	FIT	PART NO.	TITLE:	Customer NO.	WCON-Dongguan	WCON-Kunshan
A0	2012/12/06	NEW	---	XX	JYHuang	2012/12/06	mm	A4	6225-XXFMNXXB01	D-SUB SLIM CONNECTOR FEMALE 90° DIP		Tel: +86 769 85358920 Fax: +86 769 85358915 E-mail: sales@wcon.com	Tel: +86 512 57468408 Fax: +86 512 57468468 E-mail: sales@wcon.com
REV	DATE	MODIFICATION DESCRIPTION	CHANGE	Angle	APPROVE	DATE	± 3'	PROJ.					



Http: www.wcon.com